

## THINGS YOU NEED TO KNOW ABOUT VISITING THE MUSEUM

How to schedule a visit: Since reservations are required, call us at 215.991.3680 or send an e-mail to [clarkbinder@lasalle.edu](mailto:clarkbinder@lasalle.edu). When calling or e-mailing to schedule a lesson, please have the following information ready:

- Your name and school name
- Your phone number and e-mail address
- School address
- Grade level of students
- Class size
- Special needs, if any
- Preferred dates and times
- Two alternate dates and times

### FEES

The museum and gallery lessons are free. Donations are accepted.

### LENGTH OF VISIT

Lessons are 90 minutes in length, but the length of visits can be adjusted to accommodate the needs of your group.

### GROUP SIZE

Due to the size of our museum and to ensure the quality of your museum experience, we can only accommodate up to 30 students per visit. If your group is larger, please contact the museum for further information.



BO BARTLETT  
*Jesus at the Festival of Shelters*  
Oil on canvas  
Gift of St. Luke's Episcopal Church

### CHAPERONES

We require one chaperone for every five students in grades K-5 and one chaperone for every 10 students in grades 5-12. Chaperones must stay with their group at all times.

### COMMUNITY GALLERY SPACE

Your students are invited to exhibit their artwork in our community gallery space. We feature changing exhibitions throughout the school year, so we require reservations. Please note that this space is not monitored by a security system and that the University cannot be responsible for the works on display. For more information or to reserve the gallery space, please contact our Education Department at 215.991.3680.

### LUNCH

Student groups can have lunch on campus or in the Union Building before or after their visit. Your group is invited to bring pre-packed lunches or purchase food at a variety of vendors in the Union food court. No prior reservations are necessary. No food or drink is allowed in the gallery, but it can be left at the museum's reception desk.

### NAMETAGS

Nametags are not required but are greatly appreciated for elementary school groups.

### CONFIRMATION

After calling or e-mailing to reserve a time and date for your gallery lesson, a confirmation letter will be mailed to you along with a pre- and post-trip material packet.

### DIRECTIONS AND PARKING

General information about directions can be found on the University's Web site, [www.lasalle.edu](http://www.lasalle.edu). Information about parking at the University will be sent with your confirmation packet.

### MUSEUM HOURS

Monday–Friday 10 a.m. – 4 p.m., Sunday 2 – 4 p.m. Please call for summer/holiday museum hours.

### CANCELLATIONS

If you must cancel your visit for any reason, please call our Education Department as soon as you are aware of your cancellation.

We look forward to your visit!

The La Salle University Art Museum's educational programming for middle and high school students is made possible through generous support from the Connelly Foundation. Further educational and community outreach program support comes from The Brother Daniel Burke Endowment Fund.



GEORGES ROUAULT  
*Le dernier romantique, 1937*  
Oil on canvas

For more information about the La Salle University Art Museum or our gallery lessons, please visit our Web site, [www.lasalle.edu/museum](http://www.lasalle.edu/museum), or contact Miranda Clark-Binder, Assistant Curator of Education, at [clarkbinder@lasalle.edu](mailto:clarkbinder@lasalle.edu) or 215.991.3680.



# Gallery Lessons at the La Salle University Art Museum



ALFRED RETH  
*Courses A Chantilly, 1937*  
Oil on canvas  
Purchased with funds donated  
by Milton Ginsburg



## HISTORY OF THE COLLECTION

The La Salle University Art Museum began in 1965 as a study collection for the University's art history majors; it opened in its current location, on the lower level of Olney Hall, in 1976. The collection has grown as a result of acquisitions and donations from friends and collectors. The museum currently houses more than 4,000 objects and provides a survey of Western art from the 15th century to the present. Smaller collections of Japanese prints, Indian miniatures, pre-Colombian ceramics, and African sculpture offer students an opportunity to explore the arts of Asia, Africa, and the Americas. In 2007, thanks to a generous grant from the Connelly Foundation and with support from the University's Brother Daniel Burke Endowment, the museum began developing and implementing a K-12 Education and Community Outreach Program.



## MISSION STATEMENT

In addition to the basic mission of acquiring, preserving, and exhibiting its collections, the Museum seeks to foster an appreciation for and understanding of the visual arts. In the spirit of this endeavor, the Museum supports the University's educational role by presenting exhibitions and programs that are relevant to its entire curriculum and by offering a cultural and educational resource to both campus and regional communities.



## EDUCATIONAL PROGRAMMING

As part of our education initiative, the La Salle University Art Museum offers free gallery lessons and in-gallery activities to school-aged groups.

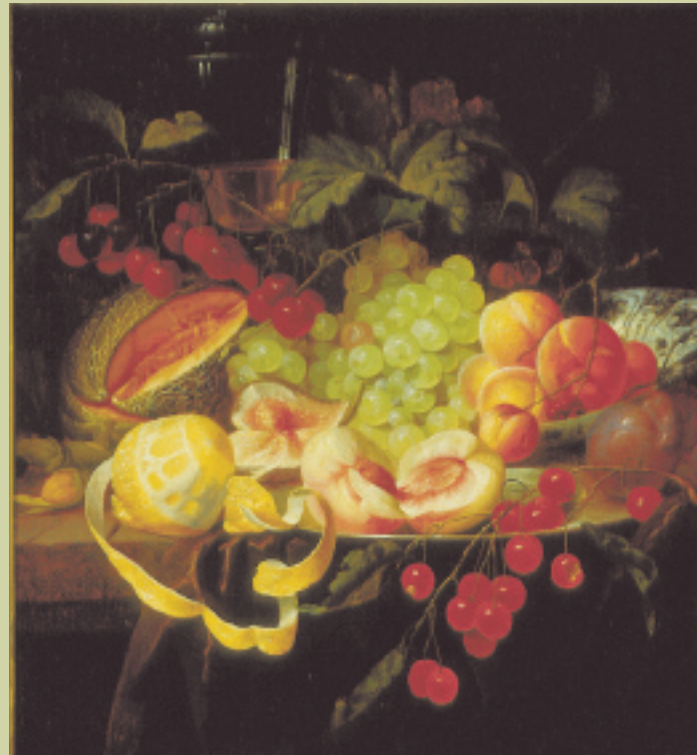
Age-appropriate, themed gallery lessons are led by the Assistant Curator of Education and can be individualized to complement your classroom curriculum. To discuss how the lessons support Pennsylvania State Academic Standards, please contact our Education Department.

## WHY YOU SHOULD CONSIDER SCHEDULING A GALLERY LESSON

- A visit to the La Salle Art Museum will give your students the opportunity to closely observe, interact with, creatively think about, and discuss art in an intimate museum setting under the guidance of a professional museum educator.
- Your students will learn to connect the visual arts with other disciplines, including but not limited to history and language arts.
- Your 90-minute gallery lesson can be fully individualized to support your classroom curriculum. Gallery lessons can be tailored to include in-gallery activities such as creative writing or sketching.



## GALLERY LESSONS



ATTRIBUTED TO JAN DAVIDSZ DE HEEM  
*Still Life with Fruit*  
Oil on canvas

### People, Places, and Things Grades K-4

Explore three genres of painting in the museum's collection—portraits, landscapes, and still lifes. The lesson will be complemented by in-gallery activities.



JACOB DE HEUSCH  
*An Arcadian Landscape*  
Oil on canvas  
Purchased with funds provided by Benjamin D. Bernstein and the Art Angels Membership Fund

### LOCAL ARTISTS Grades K-12

From Charles Willson Peale to Thomas Eakins and Bo Bartlett, the focus of this class is on the artists who have at some point in their careers called Pennsylvania "home."



SIDNEY GOODMAN  
*Man in a Black Coat*  
Oil on canvas  
Purchased with funds provided by Dr. Paul Rahter

### DRAWING IN THE GALLERIES Grades 4-8

Participate in drawing activities and in-gallery discussions to assist in understanding the museum's collection.

### TOOLS OF THE TRADE Grades 4-9

Learn about artistic media. Explore the variety of techniques and materials used by the artists in the museum's collection. Examine a sampling of various artists' tools.

### MUSEUM HIGHLIGHTS Grades 5-12

This is a chronological survey of Western art from the Renaissance to the 20th century using the museum's collection.

### BIBLICAL STORIES IN ART Grades 6-12

Compare and contrast artists' interpretations of biblical figures and stories from the Renaissance to the 20th century.



RICHARD COSWAY, R.A.  
*Lady Elizabeth Foster, Later Duchess of Devonshire*  
Oil on canvas

### PORTRAITS (PORTRAITURE AND PSYCHOLOGY) Grades 6-12

View portraits from various times and places and consider how artists have attempted to capture the likeness of their sitters. Students will be challenged to think about what has been considered a "life-like" portrait in a number of different centuries. The lesson will be complemented by in-gallery activities.

### 20TH-CENTURY ART Grades 9-12

Explore the museum's 20th-century galleries and discuss the range of styles in modern and contemporary art.



ROMARE BEARDEN  
*Louisiana Serenade*  
Off-set color lithograph

### MULTIPLE VISIT PROGRAMS Grades K-12

Study the museum's collections in greater depth by arranging two, three, or four visits to the museum throughout the school year. The Assistant Curator of Education will work with you to determine the visiting program that complements your curriculum.



WALTER WILLIAMS  
*Girl with Butterflies, 1964*  
Woodcut in five colors