

Living

AT LA SALLE

UNDERGRADUATE AND GRADUATE HOUSING



LASALLE
UNIVERSITY

DIVISION OF STUDENT AFFAIRS
Administrative Services

Undergraduate Housing

La Salle University maintains a variety of housing options for undergraduate students and apartment housing for graduate students. The various residences are located throughout campus and include 12 residence halls, two apartment complexes, and a townhouse complex. Specific amenities and descriptions are as follows:

Residence Halls

Amenities

- Connection point to the Internet in every room
- Telephone service
- Cable connection (cable television service is an individually contracted service with Comcast)
- All furnishings
- Window shades
- Lounges with cable television
- Community kitchens
- Laundry facilities
- Vending areas*

* Gold Card may be used at some locations for these services.



Locations

North Halls (St. Albert, St. Bernard, St. Cassian, St. Denis, St. George, St. Hilary, St. Jerome, and St. Katherine)

These residence halls are located at the corner of 20th Street and Olney Avenue and offer a variety of room styles, which include double rooms (11'x17'), standard triples, and single rooms. The residence halls are co-ed by floor. The mailroom for the North Halls residents is adjacent to the entrance of the complex.

*Please note that St. Katharine Hall also offers quad units. These units include two double rooms with an adjoining bathroom. No single rooms are available in St. Katharine Hall.

St. Edward and St. Francis

These two residence halls are located adjacent to the Hayman Center and offer double rooms (11'x17'), and single rooms. These residence halls have the same features as the North Halls Complex with the mailroom located in the neighboring St. Miguel Townhouses.

St. Neumann

St. Neumann is adjacent to St. Basil Court, the Communication Center, the IBC Fitness Center, and Treetops Café. Double rooms, standard triples, and single rooms are available. St. Neumann offers the same features as North Halls with the addition of a multi-purpose lounge that includes a pool table and a full kitchen. The mailroom is located in the lobby of the neighboring Treetops Café.

St. Basil Court

St. Basil Court is adjacent to the baseball field, IBC Fitness Center, St. Neumann, and Tree Tops Café. This facility features suites and double rooms which are co-ed by door. Suite style rooms feature two double bedrooms with a shared entrance and bathroom with two vanities. Floors with double rooms contain community bathroom and shower facilities. This facility is air-conditioned, equipped with a fire sprinkler system, and offers common areas located at the end of each floor, a dance studio, a group study lounge, and a large group lounge. The mailroom for St. Basil Court residents is located in the lobby of the Treetops Café.

Below L-R: North Halls, St. Basil Court, and St. Edward Hall



Undergraduate Housing

Apartments and Townhouses

Amenities

- Connection point to the Internet in every bedroom
 - Telephone service provided through a connection point in the kitchen
 - Cable television connection provided in the living room (cable television service is an individually contracted service with Comcast)
 - All furnishings
 - Full kitchens
 - Window shades
 - Wall-to-wall carpeting
 - Laundry facilities
 - Vending areas*
- * Gold Card may be used at some locations for these services.



Locations

La Salle Apartments

These apartments are located on the corner of Chew and Wister streets and house up to 108 students in 27 fully furnished, two-bedroom, four-person units. La Salle Apartments residents may pick up their mail at the North Halls Mailroom.

St. Teresa Court Apartments

The apartments are located one block west of the La Salle Apartments and house up to 69 undergraduate and 30 graduate students in 40 fully furnished, one-bedroom and two-bedroom units. St. Teresa Court residents retrieve their mail from the St. Miguel Mailroom.

St. Miguel Townhouses

The townhouses are located on the west side of campus, adjacent to St. Edward & Francis halls and the Hayman Center. Designed for upper division students, St. Miguel offers 73, three-story, five-person units, which are fully furnished and feature four bedrooms, two bathrooms, a full kitchen, and central air conditioning. Laundry facilities, a vending area, and the mailroom are located in the community area near the entrance to the townhouses.



Below L-R: La Salle Apartments, St. Teresa Court Apartments, and St. Miguel Townhouses



Undergraduate Housing

Benefits of Living on Campus

Security

Access to all residences are controlled by an ID card monitoring system, and all of the traditional residence hall-style buildings are also staffed 24/7 with Security Desk Receptionists and are monitored by a closed circuit television camera at the entrance.

Safety

Life safety systems include smoke detectors, direct notification to emergency personnel, and regular evacuation drills.

Convenience

The units that comprise the residential community at La Salle University are within walking distance of all campus facilities. Academic and non-academic resources are just steps away and include the library, recreational facilities, and social and cultural venues.

Food Service

Students assigned to traditional residence hall-style rooms are required to purchase one of the Food Service residential meal plans. A meal plan is optional for apartment and townhouse residents. Please refer to www.lasalle.edu/businessaffairs/foodservice for complete information.

Cars and Parking

Students may bring cars to campus. Parking in any University lot requires registration with Safety and Security. Freshmen may only park in the Good Shepherd lot at the far northwest end of campus at no cost, while upper division students may park in any University lot. All lots other than the Good Shepherd lot require a parking fee. Please refer to www.lasalle.edu/admin/businessaffairs/security/parking.htm.

Transportation

La Salle University provides shuttle bus service during the Fall and Spring semesters. The shuttle operates from 7:30 a.m. to 2:00 a.m. Sunday through Thursday, and 7:30 a.m. to 3:00 a.m. Friday and Saturday. A second shuttle operates from 7:45 a.m. to 6:15 p.m., Monday through

Friday. Students also have convenient access to public transportation through the SEPTA station at Broad and Olney. Escort service is provided by La Salle Safety and Security.

Property Insurance

Neither the University nor Administrative Services can assume responsibility for theft, loss, or damage to a resident's personal property as stated in the Student Guide to Resources, Rights, and Responsibilities. Homeowners insurance can often be extended to cover such losses. Otherwise, National Student Services Inc. provides property insurance to students nationwide. You may apply online at www.nssinc.com. For additional information, please contact NSSI at 1.800.256.6774. Personal property insurance is recommended.

Undergraduate Housing Selection Process

Each Spring semester, the University provides students with the opportunity to select their roommates and housing accommodations for the upcoming academic year through the Housing Selection Process. Students select housing based upon their housing points and completion of the Housing Selection Guidelines. More information can be found in the Housing Selection Guide and at www.lasalle.edu/students/dean/admin/housing.



Undergraduate Housing

Residential Learning Communities

In complement to the current special interest housing options, such as Honors Program and Winter Sport Athletes, we invite proposals for two new Residential Learning Communities (R.L.C.s) for 2006-07.

To be located in St. Katharine Hall, on the first and second floors east (approximately 45 bed spaces, with a refurbished community lounge) and the first and second floors west (approximately 40 bed spaces, with a refurbished community lounge), respectively, these new R.L.C.s will be specially set-aside residential areas in which students, with the guidance of faculty or staff mentors, will live with other students of similar academic or extracurricular interests, following the development and acceptance of formal proposals.

Funds will be made available to help R.L.C.s develop related activities and events for themselves and the University community, and to compensate the student and faculty/staff mentors. The two groups of students whose R.L.C. proposals are accepted will be directly assigned to one of the two areas designated in St. Katharine Hall, regardless of housing priority points. Students interested in developing an R.L.C. should pay their housing deposits and submit their Housing Applications by the general University deadline; indicate their interest on their Housing Applications; and then follow the steps outlined in the R.L.C. new group proposal.

Students preferring to live in these special communities should indicate such preferences on their housing application. A special application and approval process will be required for new groups interested in applying to become associated with the Residential Learning Communities Program.



Medical Housing Requests

Students seeking special housing accommodations for health/medical reasons must submit their request to the Student Health Center. Requests are satisfied based upon approval from Health Services and space availability. Request forms are available online at www.lasalle.edu/services/health/forms.htm.

How To Apply for Housing

In order to apply for housing, the student must pay the \$200 housing deposit and submit a Housing Application. Most current students apply for and select their housing for the coming academic year during the Housing Selection Process, which takes place during the spring semester. The \$200 housing deposit is due prior to the submission of your application and is credited to your University account. Housing deposits may be submitted online through

the Bursar's Web site at www.lasalle.edu/admin/businessaffairs/bursar/payments.htm or at the Bursar's Office (Administration Center, Suite 117). The Housing Application is also available online at <http://www.lasalle.edu/students/dean/admin/housing> or in the Administrative Services Office (Union 205). Students are encouraged to contact Student Financial Services at 215.951.1070 if they have any questions regarding their Financial Aid Package. Financial holds must be cleared from the student's account prior to the submission of the housing deposit and application. Any student with a hold on his/her account will be unable to submit a deposit and application prior to the hold being removed. More information regarding the Housing Selection Process can be found online and in the Housing Selection Guide, which is released in the Spring semester.

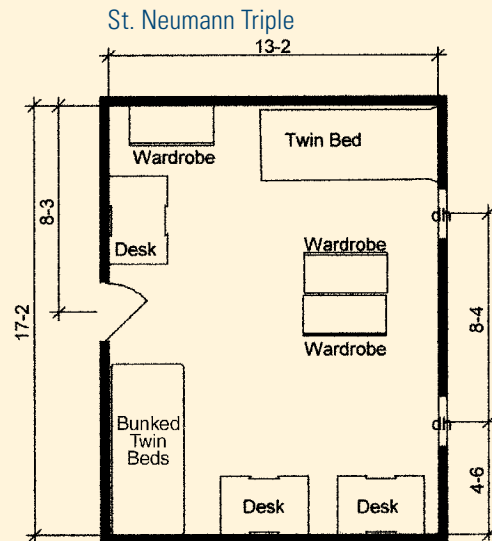
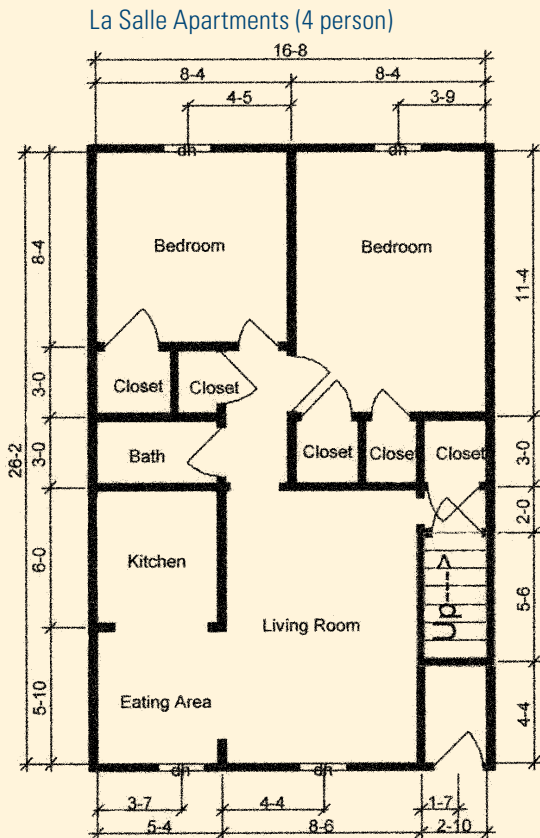
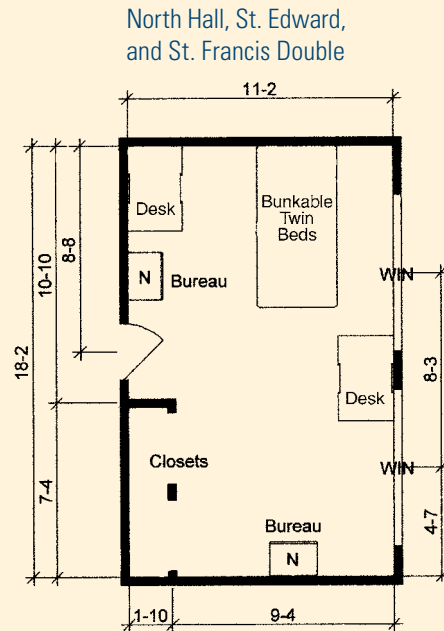
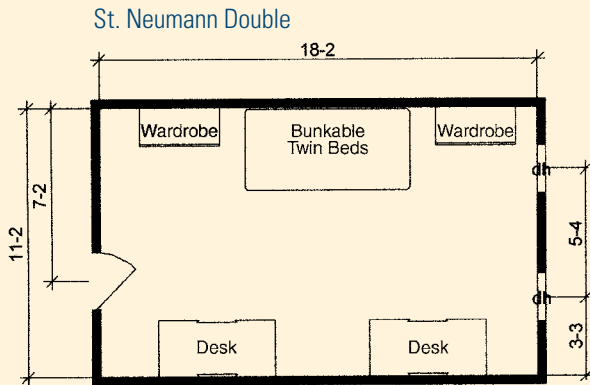
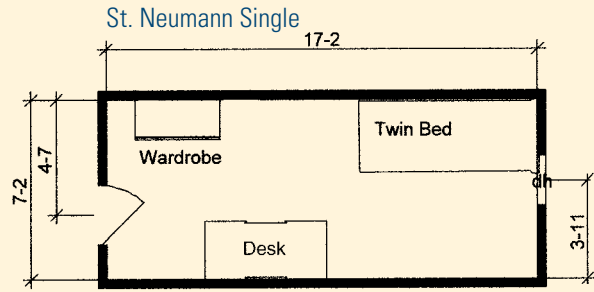
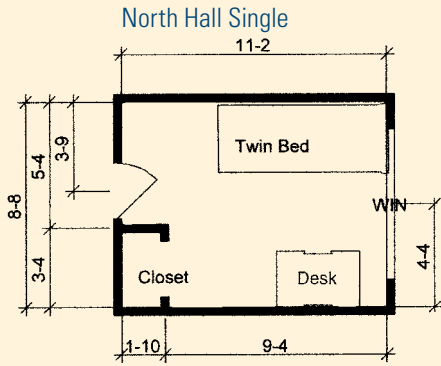
Students who are looking for roommates are provided a tool to do so through the Roommate Classified group on the mylasalle Portal. Finding roommates can be a stressful task. We help make the process easier with the Roommates Classifieds on mylasalle. Designed during the Housing Selection Process as a test for the portal, the GROUP on mylasalle proved to be a helpful tool for students looking to meet other Lasallians interested in finding new roommates. The GROUP function on mylasalle enabled students to post and read messages from students interested in living in certain accommodations as well as read announcements and messages from Administrative Services about the process. This year, all forms, marketing materials, and relevant information will be posted here to help students in finding a roommate(s).

5



Undergraduate Housing

General Room Measurements and Configurations (measured in feet)



Please note that individual room measurements and configurations will vary from unit to unit among our various residential complexes. For specific measurements, please visit the Student Affairs channel on the mylasalle Portal and click on the Room Measurement icon for those details.

Graduate Housing

La Salle University maintains housing options for graduate students in the St. Theresa Court Apartments. This residential facility is located on Olney Avenue across from the Good Shepherd Parking Lot.

Amenities

The St. Theresa Court Graduate Apartments feature:

- Two Community Assistants who live in the complex
- Front gate entrance security systems
- Laundry room
- Large secured courtyard

In addition, each unit within the complex features:

- Wall-to-wall carpeting
- Room air conditioner units
- Kitchens
 - Tiled bathrooms
 - Window shades
 - All Furnishings
 - Sofa, chairs, end tables, coffee table
 - Kitchen table and chairs
 - Refrigerator and stove
 - Bed, dresser, desk, and desk chair



Benefits

Convenience

The units that comprise the residential community at St. Theresa Court are within walking distance of all campus facilities. Academic and non-academic resources are just steps away and include the library, recreational facilities, and social and cultural venues. The apartments are fully furnished; all utilities, except long-distance telephone service are included in the rent.

Safety and Security

We make every effort to maintain the highest level of security in and around our residences. Access to all campus residences is limited to La Salle residential students and their guests. Exterior lighting and landscaping are designed to enhance exterior safety and pedestrian comfort. Life safety systems at St. Theresa Court include smoke detectors, direct notification to emergency personnel, and regular evacuation drills.



ResNet

All units are wired for access to the La Salle network, with every bedroom having a connection point to the Internet. Telephone and video services are provided through connection points in the kitchen and living room respectively.

Privacy

St. Theresa Court offers an environment well suited for a serious and busy graduate student. All units offer single occupancy or a private bedroom.

A Community Environment

Living among other students on campus offers multiple opportunities to meet people with whom you can study and socialize. Visit the Community Development and University Life sections of www.lasalle.edu/studentaffairs to learn more.

The Application/Occupancy Agreement for Graduate Housing can be found online at www.lasalle.edu/students/dean/admin/housing/gradhousing.htm. This Application/Occupancy Agreement must be completed and returned along with a \$200 housing deposit. The \$200 non-refundable housing deposit may be paid either online at www.lasalle.edu/admin/businessaffairs/bursar/payments.htm or by returning a \$200 check along with the Application/Occupancy Agreement to:
La Salle University, 1900 W. Olney Ave., Administrative Services, Box 835, Philadelphia, PA 19141

More information regarding Graduate Housing may be found at www.lasalle.edu/students/dean/admin/housing/gradhousing.htm.

Live in On-Campus Housing

- Involvement
- Building Relationships
- Community
- Learning



**LASALLE
UNIVERSITY**

DIVISION OF STUDENT AFFAIRS
Administrative Services

1900 West Olney Avenue
La Salle Union, Suite 205
Philadelphia, PA 19141

P: 215.951.1370